



**Enerdrive**  
DRIVING YOUR ENERGY NEEDS

# eSYSTEM-F



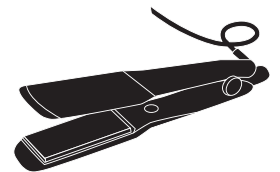
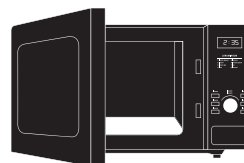
## WHAT'S INCLUDED?

- ◆ ePOWER AC 40Amp 230v Charger ◆ ePOWER DC2DC 40+ Charger ◆ Simarine Pico LCD WIFI Monitoring Screen
  - ◆ Simarine SC301 300A Main Battery Shunt ◆ Simarine SCQ25T Individual Load/Charge Module
  - ◆ 3 Stud Main Negative Bus Bar ◆ 40A Low Battery Cutout ◆ Main System Circuit Breaker 120A
    - ◆ Inverter Circuit Breaker 200A ◆ Solar Input Positive Circuit Breaker 40A
  - ◆ ePOWER DC2DC 60A Output Fuse Connection ◆ ePOWER AC Charger 50A Output Fuse Connection
    - ◆ 2 x 30A Load Output Fuse Connections ◆ 24hr Critical Load 4 Circuit "Wedge" Fuse Block
- ◆ ePOWER 2000W AC Transfer Inverter with RCD & AC Transfer Switch ◆ Battery Restart Switch (Lithium Batteries)
  - ◆ 12mm Black Plastic Mounting Board. Water & Rot Resistance

## BENEFITS OF THIS SYSTEM

<b>SERVICE &amp; SUPPORT</b>	<b>DIAGRAMS AVAILABLE ONLINE</b>
<b>QUICK &amp; EASY INSTALLATION</b>	<b>5 YEAR WARRANTY</b>
<b>PROGRAMMABLE FOR MOST BATTERIES</b>	<b>LIFETIME TECH SUPPORT</b>

## SUITABLE FOR 12V AND AC APPLIANCES





**COMPONENT DESCRIPTIONS**

1.	DC2DC - Safely charge your Battery System via vehicle & solar
2.	AC Charger - Safely charge your Battery System from AC Mains or Generator
3.	Inverter - Use appliances up to 2000 watts
4.	Battery Reset Button - Restart your flat Lithium Battery with ease
5.	Simarine Shunt - Monitor multiple circuits; eg. fridge, solar lights, water tank etc
6.	Quality Circuit Protection


**COMPLETE YOUR SYSTEM WITH ENERDRIVE B-TEC LITHIUM BATTERIES**



**FEATURES**

5 Year Warranty
Lifetime Support
Bluetooth Battery Monitor
Battery Reset Button
Serviceable Internal Bms (by Enerdrive)
Size & Weight Savings

**TO BUILD THE ULTIMATE ENERDRIVE POWER SYSTEM,  
CONSIDER THESE SYSTEM UPGRADE OPTIONS:**

<b>€SYSTEM-F OPTIONS</b>	<b>QTY</b>
Battery to Board Cable Kit	
Solar Panels	
B-TEC Battery/Batteries	
Battery Parallel Cable Kit	
Tow Hitch to DC2DC Cable Kit	
Vehicle Start Battery to Tow Hitch Cable Kit	
Solar Cable Kit	
Tri-Star Solar Controller (mounted separately)	
Replace 25T Shunt  for SCQ50 (x4 50A Monitorable shunt channels)	
Water tank module ST107 (x4 tank) mounted separately	

*Any questions please speak to your Enerdrive representative today. We can help you create the Ultimate Power System.*

# NOTES

-----

-----

-----

-----

-----

-----

-----

-----

-----

-----

